

The Ageing Eye Conference

Art Museum Bonn, Germany

Friday, March 20, 2009

10:00 - 12:00 *Registration & Welcome Refreshment*

I. Global Perspective for Causes for Worldwide Blindness

Chair: **Eberhart Zrenner**

12:00 - 12:30 **Serge Resnikoff** (European Region, International Agency for Preventi- on of Blindness): Global Perspective for Causes for Worldwide Blindness – Trends and Challenges

12:30 - 13:00 **Gary C. Brown** (Wills Eye Hospital, Jefferson Medical College, Philadelphia; Center for Value-Based Medicine, Flourtown, Pennsylvania, USA): Diabetic Retinopathy: An Emerging Cause of Global Blindness and Quality-of-Life Changes

II. Fundamental Processes of Ageing and Rejuvenation

Chair: **Lenhard Rudolph**

13:00 - 13:30 **Oliver Brüstle** (Institute of Reconstructive Neurobiology, University of Bonn; Life & Brain Center and Hertie Foundation): From Pluripotent Stem Cells to Functional Neurons and Glia

13:30 - 14:00 **Lenhard Rudolph** (Institute of Molecular Medicine and Max-Planck-Research-Group on Stem Cell Ageing, University of Ulm): Molecular Causes of Ageing

14:00 - 14:30 **Solon Thanos** (Dept. of Experimental Ophthalmology, University of Münster): Mechanisms Controlling Regeneration of Ganglion Cell Axons in the Ageing Monkey Retina

14:30 - 15:00 **Yvan Arsenijevic** (Unit of Gene Therapy & Stem Cell Biology, Hopital Jules-Gonin, Lausanne): Which Retinal Stem Cells for Retina Repair?

15:00 - 15:45 *Coffee Break*

III. AMD – Age-Related Macular Degeneration

Chair: **Frank G. Holz**

15:45 - 16:00 **Macdonald Curran** (Macular Disease Society UK, AMD Alliance International): The Patient Eye

16:00 - 16:25 **Frank G. Holz** (Dept. of Ophthalmology, University of Bonn): Dry Age-Related Macular Degeneration - New Perspectives and Future Directions

16:25 - 16:50 **Caroline Klaver** (Dept. of Ophthalmology, Erasmus Medical Center, Rotterdam): Diet and Genetic Susceptibility in Age-related Macular Degeneration

16:50 - 17:15 **Philip Luthert** (Institute of Ophthalmology, University College London): Models of Age-related Macular Degeneration

17:15 - 17:40 **Victor Chong** (Dept. of Ophthalmology, University of Oxford): Biomarkers in AMD

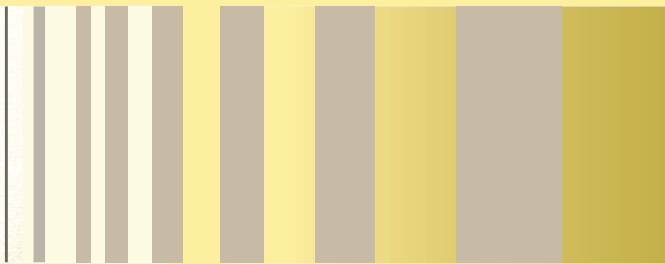
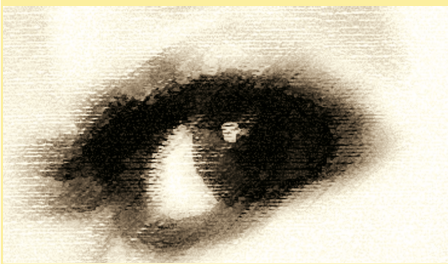
Evening Event

17:45 - 18:30 *Aperitif*

18:30 - 19:15 Special Lecture: „Ageing Eye in Art“ presented by **Pinar Aydin** (Ankara, Turkey)

19:30 - open *Dinner*





The Ageing Eye Conference

Art Museum Bonn, Germany

Saturday, March 21, 2009

09:00 - 09:20 **Manuel Hallen** (European Commission, Brussels):
'Health' in FP7 - A focus on the Translation of Knowledge into Applications

IV. (Primary Open-angle) Glaucoma

Chair: **Paulus de Jong**

09:20 - 09:45 **Paulus de Jong** (Netherlands Institute for Neuroscience, Amsterdam):
Slippery Roads Towards Disentangling Glaucoma

09:45 - 10:10 **Ulrich Welge-Lüssen** (Dept. of Ophthalmology, University of
Erlangen-Nuernberg): Ageing as Risk Factor for Glaucoma

10:10 - 10:35 **Norbert Pfeiffer & Christian Wolfram** (Dept. of Ophthalmology,
University of Mainz): Ageing and Primary Open-Angle Glaucoma

10:35 - 11:15 **Nomdo M. Jansonius** (Department of Ophthalmology,
University of Groningen): T.B.A.

11:15 - 11:45 *Coffee Break*

V. Socioeconomic Impact of Ageing Eye Diseases and Visual Rehabilitation

Chair: **Gary C. Brown**

11:45 - 12:30 **Melissa M. Brown** (Leonard Davis Institute of Health Economics,
University of Pennsylvania; Dept. of Ophthalmology, University of
Pennsylvania School of Medicine, USA): Value-Based Paradigm in
Care of the Visually Disabled

12:30 - 12:45 **Christina Fasser** (Retina International, Zürich):
Rehabilitation - A Patient's Perspective

12:45 - 13:45 *Lunch*

13:45 - 14:10 **Susanne Trauzettel-Klosinski** (Centre for Ophthalmology,
University of Tübingen): Rehabilitation of Reading Ability in AMD-
Patients

14:10 - 14:35 **Gary S. Rubin** (Institute of Ophthalmology, University College London):
Visual Rehabilitation for Patients with Central Scotomas

14:35 - 15:00 **Hans-Werner Wahl** (Dept. of Psychological Ageing Research,
Institute of Psychology, University of Heidelberg):
Fundamentals of Psychological Adaptation to Age-related Vision Loss:
Practical Implications

VI. Overview of Conference

Chair: **Hendrik P. N. Scholl**

15:00 - 15:20 **Hendrik P. N. Scholl** (Dept. of Ophthalmology, University of Bonn)

15:20 - 16:20 *Farewell Coffee*



Conference venue

Art Museum Bonn
Museumsmeile
Friedrich-Ebert-Allee 2
53113 Bonn
Germany

kunstmuseum.bonn.de